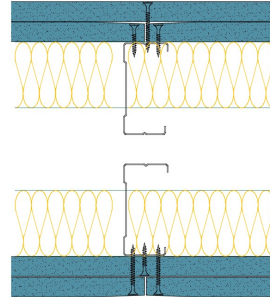


## TWHD70-B-60(2x50) - SPEEDLINE System Data Sheet - Version V1 (24-10-23)

Twin SPEEDLINE 70mm Heavy Duty 'C' Stud  
Partition @600mm Ctrs, with 2x BG Gyproc 15mm  
SoundBloc each side, 50+50mm APR



### System Performance Breakdown

Fire Resistance:

BS476 Part 22:1987:

Test Ref & Date or Applied Ref & Report:

Max Height:

Thickness:

Duty Grade: BS 5234: Part 2:1992:

Sound Insulation:

**90/90 Minutes** (Integrity/Insulation).

**BTC 17440F - BRE Report P102396-1011A**

**Refer to Speedline Specification Clause**

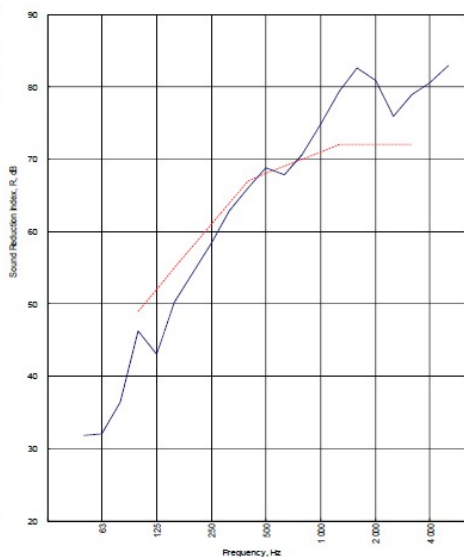
**220 mm.** (At Base Track, Excluding Finishes)

**Severe - Annexes A-F**

**68  $R_w$ dB, -8 Ctr** Date Tested or Assessed Against - 06/03/2015

Test Code:  
H19028AA  
Test Date:  
06/03/2015

Freq. Hz	R dB
50	31.8
63	32.0
80	36.5
100	46.3
125	43.0
160	50.3
200	54.3
250	58.0
315	62.9
400	66.0
500	68.8
630	67.8
800	70.6
1 000	74.0
1 250	79.4
1 600	82.0
2 000	80.9
2 500	75.9
3 150	78.9
4 000	80.8
5 000	82.9



Rating according to BS EN ISO 717-1:2013	<b><math>R_w</math> (C;Ctr) = 68 (-3;-8) dB</b>		
Evaluation based on laboratory measurement results obtained by an engineering method:	Max dev. 9 dB at 125 Hz		
	$C_{50-150} = -6$ dB	$C_{50-800} = -5$ dB	$C_{100-5000} = -2$ dB
	$C_{tr, 50-3150} = -17$ dB	$C_{tr, 50-8000} = -17$ dB	$C_{tr, 100-8000} = -8$ dB

TESTED AT ONE OF THE UKAS ACCREDITED LABORATORIES BELOW

- B.T.C (H-Ref on Graph)
- B.R.E
- AIRO
- S.R.L

Customer: Voestalpine Metsec Plc Dry Lining

BTC 19028A: Page 10 of 13



SPEEDLINE Drywall Systems, Adsetts House, 16 Europa View, Sheffield Business Park, Sheffield, S9 1XH.

Tel: 0114 231 8030.

Email: [enquiries@speedlinedrywall.co.uk](mailto:enquiries@speedlinedrywall.co.uk)

(As per the requirements set out in ISO/IEC 17025:2017 regarding test data the results stated have been carried out by voestalpine Metsec plc as part of the contract to supply Speedline Metal Sections to SIG Plc)